



PRICE GUIDE: Under Offer!
 Area: 251 m2
 Council Rates: \$2,104.93 p.q.
 Water Rates: \$1,537.72 p.q.

Simply Stunning!

Now Under Offer via Openn Negotiation (flexible conditions online auction).

Positioned quietly at the rear, with high quality finishes, this sensational family size home features a spacious open plan living area and a deluxe kitchen complete with state of the art Miele appliances and engineered stone bench tops with waterfall ends to a generous island bench.

The super spacious dining and living areas flow out to a covered alfresco and generous courtyard for year round entertaining enjoyment.

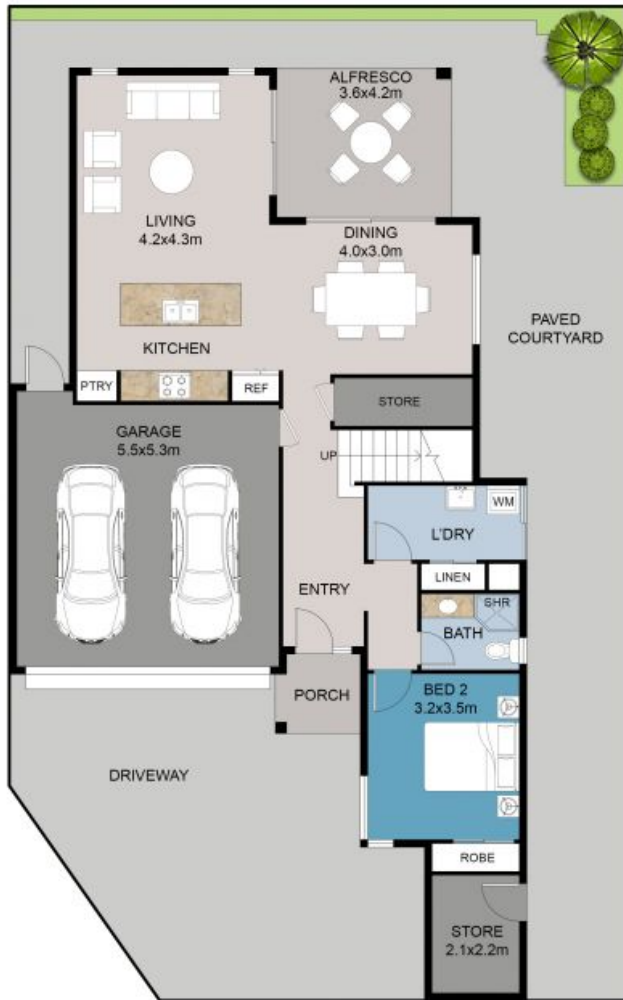
The versatile floor plan provides a spacious guest bedroom downstairs with bathroom, perfect if guests drop in, intergenerational living, or a teenagers retreat.

You'll Love:



Rob Stefanovski
 +61 417 928 888

Rob Stefanovski
 +61 417 928 888



GROUND FLOOR PLAN
ON SITE PLAN



FIRST
FLOOR PLAN

This floor plan including furniture, fixture measurements and dimensions are approximate and for illustrative purposes only. BoxBrownie.com gives no guarantee, warranty or representation as to the accuracy and layout. All enquiries must be directed to the agent, vendor or party representing this floor plan.

Land Area : 251m² (approx)
Building Area Total : 229m² (approx)

79D Waterloo Street, Joondanna